

Quick Reference Guide

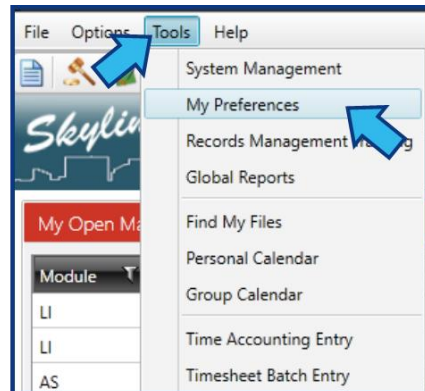
There are 5 steps to complete this task:

1. [Open My Preferences.](#)
2. [Select Initial View.](#)
3. [Select a default view.](#)
4. [Press OK.](#)
5. [Press Close.](#)

Standard Guide

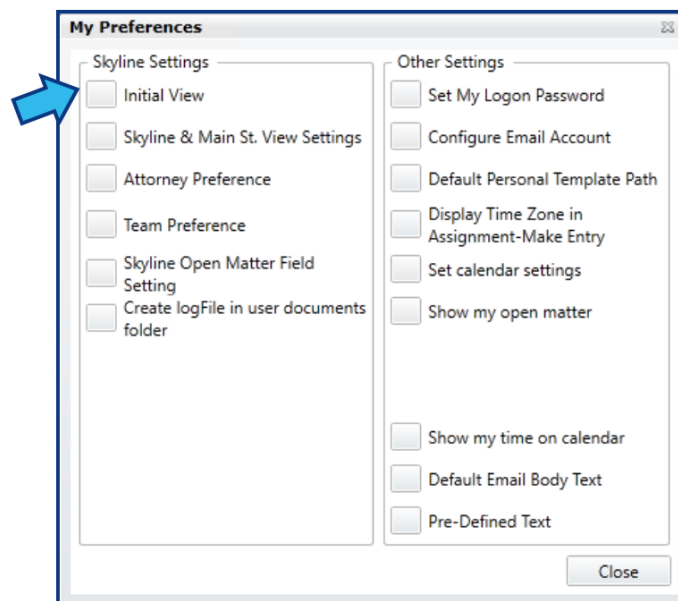
Step 1. Open My Preferences.

To open **My Preferences**, select **Tools** on the **Menu Bar**, then select **My Preferences**. The **My Preferences** window will appear.



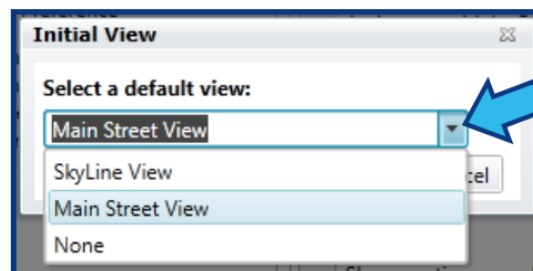
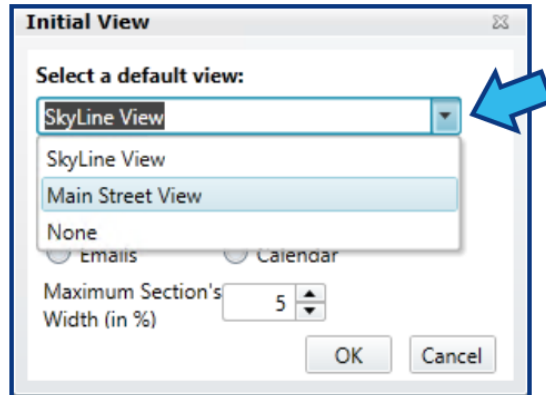
Step 2. Select Initial View.

Select the box beside **Initial View** located on the left side under **Skyline Settings**.



Step 3. Select a default view.

In the **Select a default view** drop-down, choose a view.



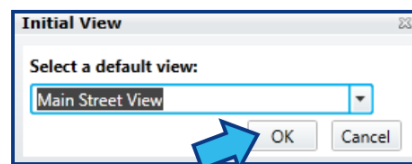
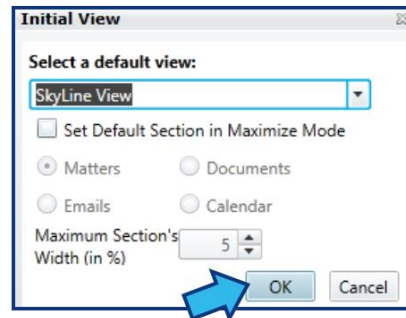
SkyLine View displays up to 4 of 6 possible categories in an at-a-glance grid layout. For more information, check out this article: [Customize Skyline View](#).

Main Street View displays up to 4 of 6 possible categories as selectable tabs on the left side of a 2-panel layout. The right panel displays a preview when an item in the left panel is selected. For more information, check out this article: [Customize Main St View](#).

None displays the **Global Toolbar** and an empty canvas.

Step 4. Press OK.

Press the **OK** button located at the bottom of the **Initial View** window.



Step 5. Press Close.

Press the **Close** button located at the bottom of the **My Preferences** window. The default view you have selected will be displayed.

