

There are 10 steps to complete this task:

1. Open CLW.
2. Press Tools icon.
3. Select Internet options.
4. Select the Security tab.
5. Select Trusted sites.
6. Press Sites.
7. Uncheck Require server verification.
8. Press Add.
9. Press Close.
10. Press OK.

## Standard Guide

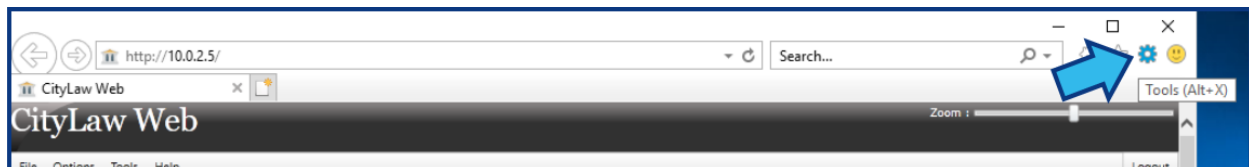
### Step 1. Open CLW.

**CLW** should be configured to open in **Internet Explorer**. Open **CLW** by double-clicking on the desktop icon. NOTE: Your icon may look different.



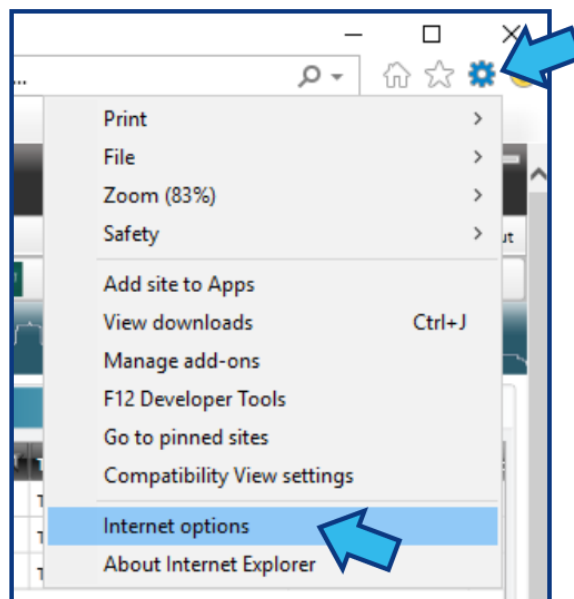
### Step 2. Press Tools icon.

The web version of **CLW** opens in an **Internet Explorer** browser. On the top-right corner of the browser window, press the **Tools** icon that looks like a gear.



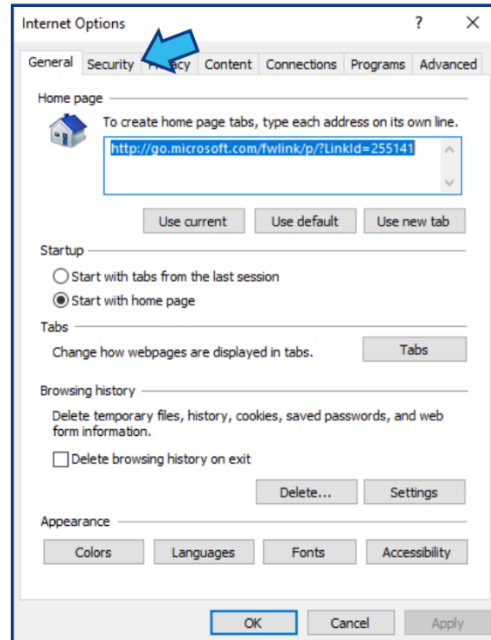
### Step 3. Select Internet options.

Select **Internet options** near the bottom of the list of options.



## Step 4. Select the Security tab.

In the **Internet Options** window, select the **Security** tab.



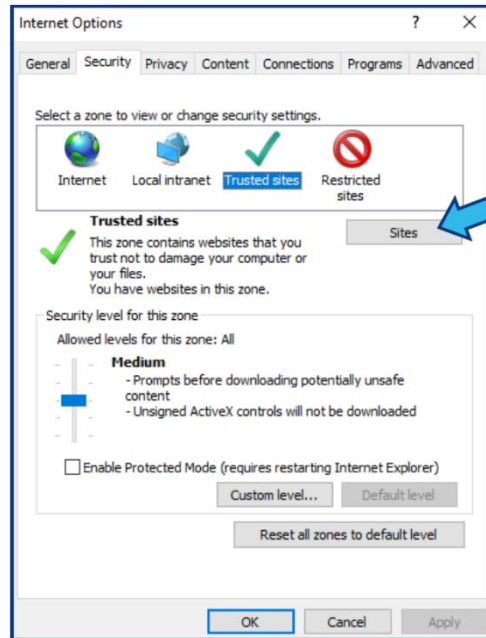
## Step 5. Select Trusted sites.

Select **Trusted sites** in the zones box.



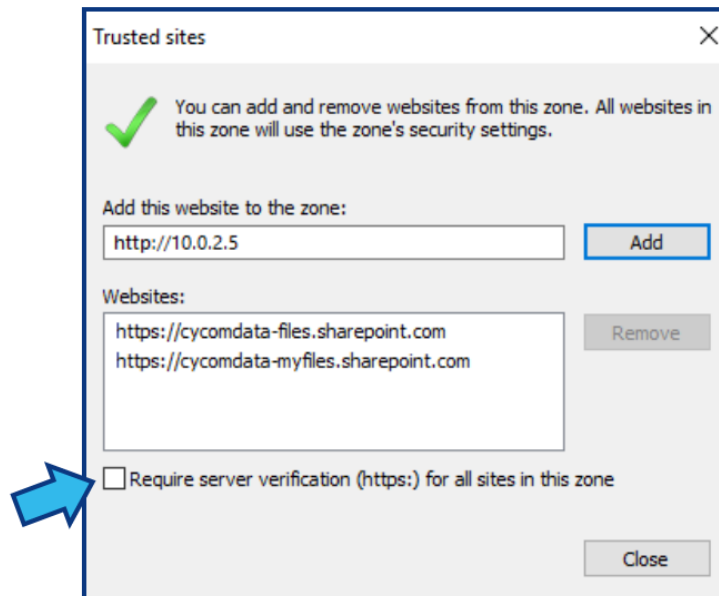
## Step 6. Press Sites.

Press the **Sites** button.



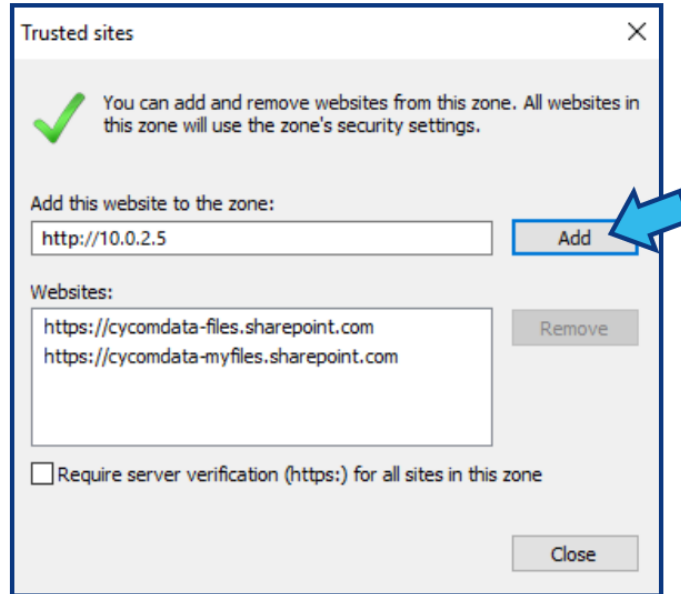
## Step 7. Uncheck Require server verification.

If there is a check in the box beside **Require server verification (https:) for all sites in this zone**, uncheck the box.

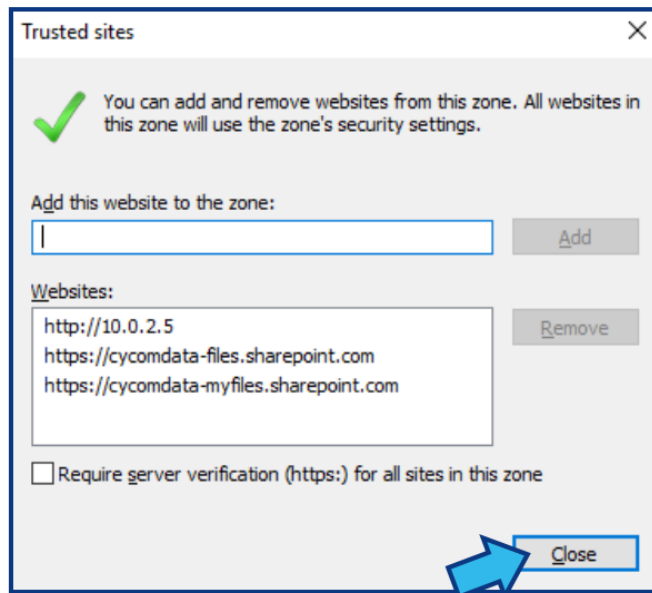


**Step 8. Press Add.**

Press the **Add** button.

**Step 9. Press Close.**

Press the **Close** button at the bottom-right of the **Trusted sites** window.



**Step 10. Press OK.**

Press the **OK** button at the bottom of the **Internet Options** window.

